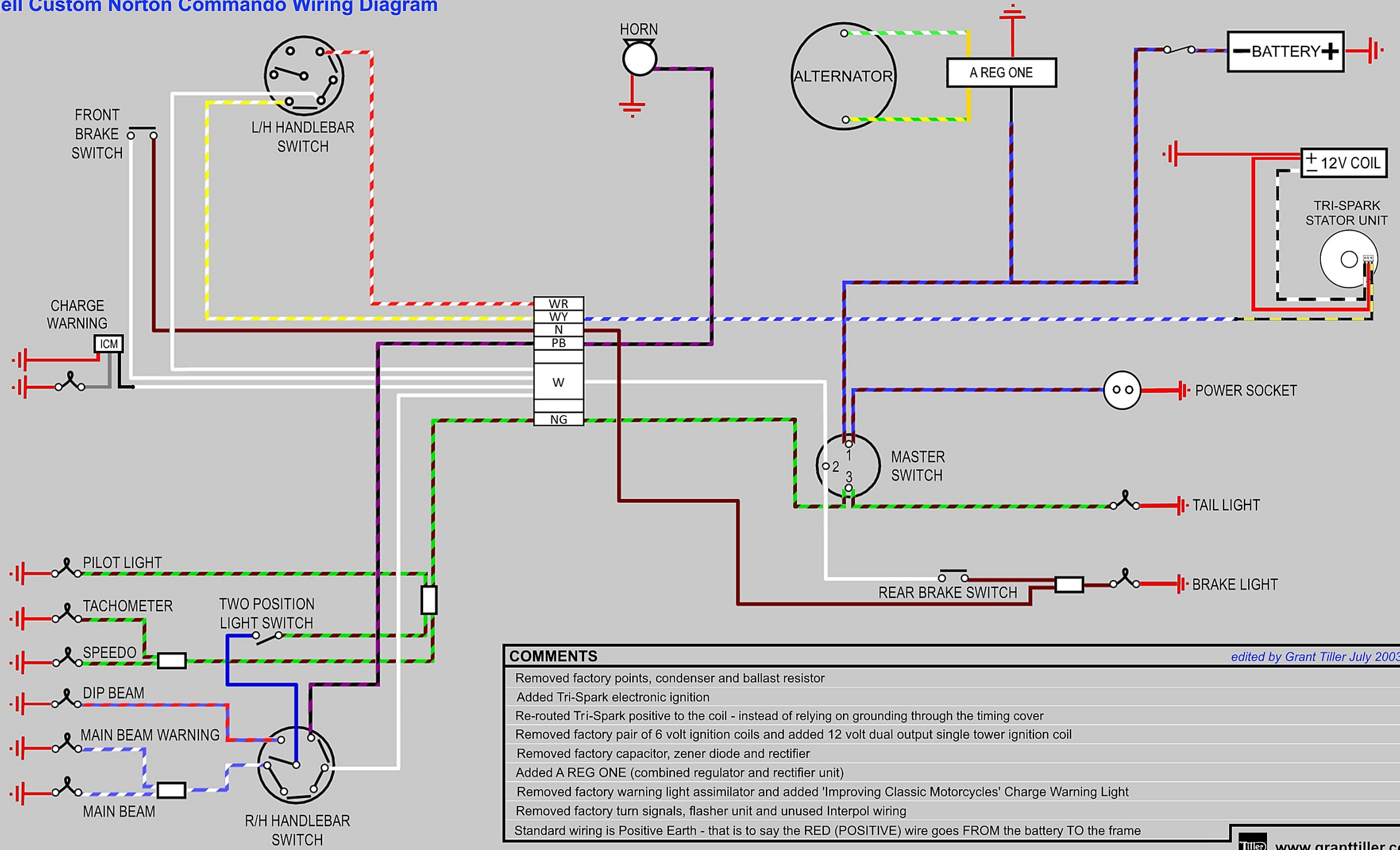


Kjell Custom Norton Commando Wiring Diagram



COMMENTS

- Removed factory points, condenser and ballast resistor
- Added Tri-Spark electronic ignition
- Re-routed Tri-Spark positive to the coil - instead of relying on grounding through the timing cover
- Removed factory pair of 6 volt ignition coils and added 12 volt dual output single tower ignition coil
- Removed factory capacitor, zener diode and rectifier
- Added A REG ONE (combined regulator and rectifier unit)
- Removed factory warning light assmilator and added 'Improving Classic Motorcycles' Charge Warning Light
- Removed factory turn signals, flasher unit and unused Interpol wiring
- Standard wiring is Positive Earth - that is to say the RED (POSITIVE) wire goes FROM the battery TO the frame

edited by Grant Tiller July 2003