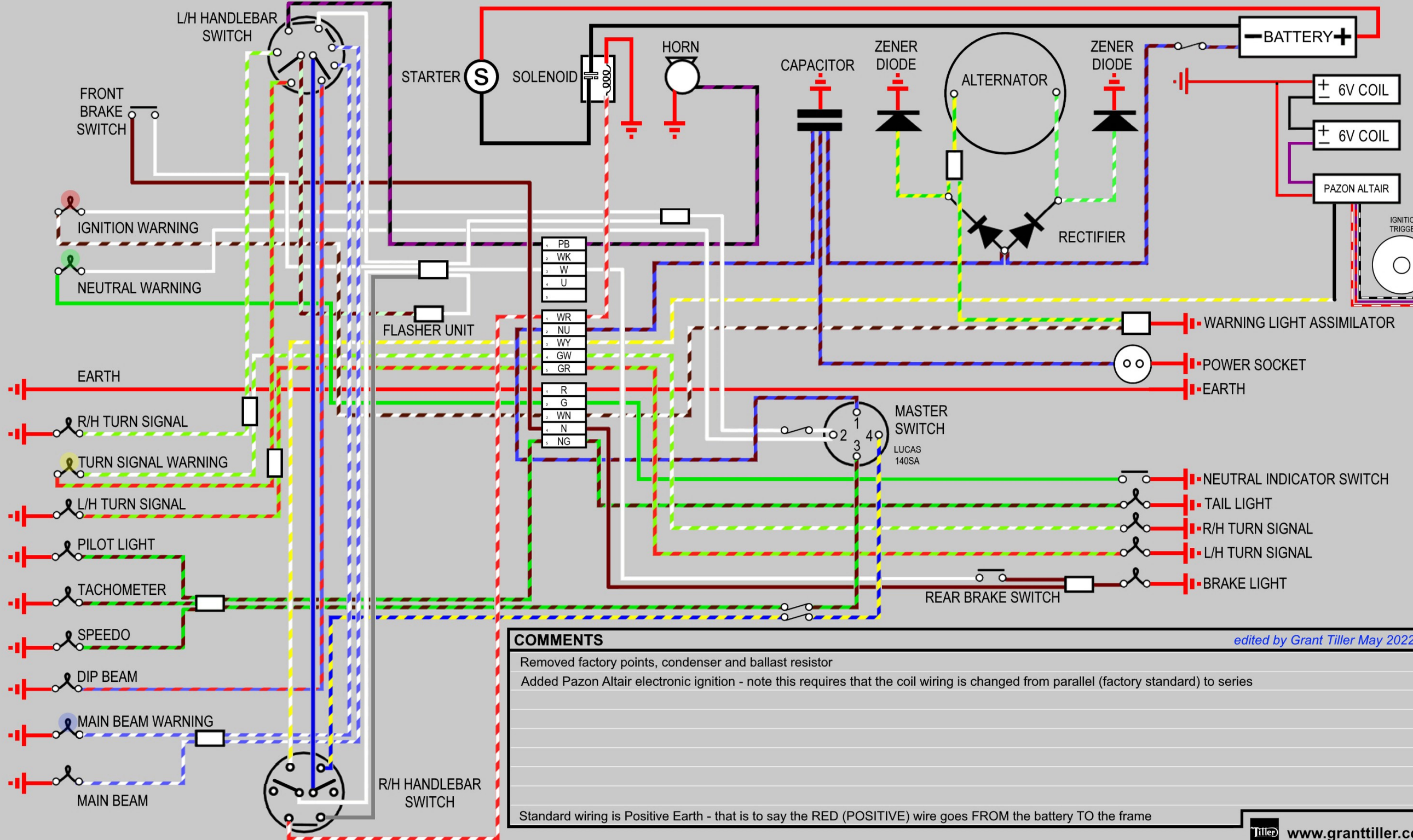


1974 MK3 Norton Commando Wiring Diagram



COMMENTS *edited by Grant Tiller May 2022*

Removed factory points, condenser and ballast resistor
 Added Pazon Altair electronic ignition - note this requires that the coil wiring is changed from parallel (factory standard) to series

Standard wiring is Positive Earth - that is to say the RED (POSITIVE) wire goes FROM the battery TO the frame