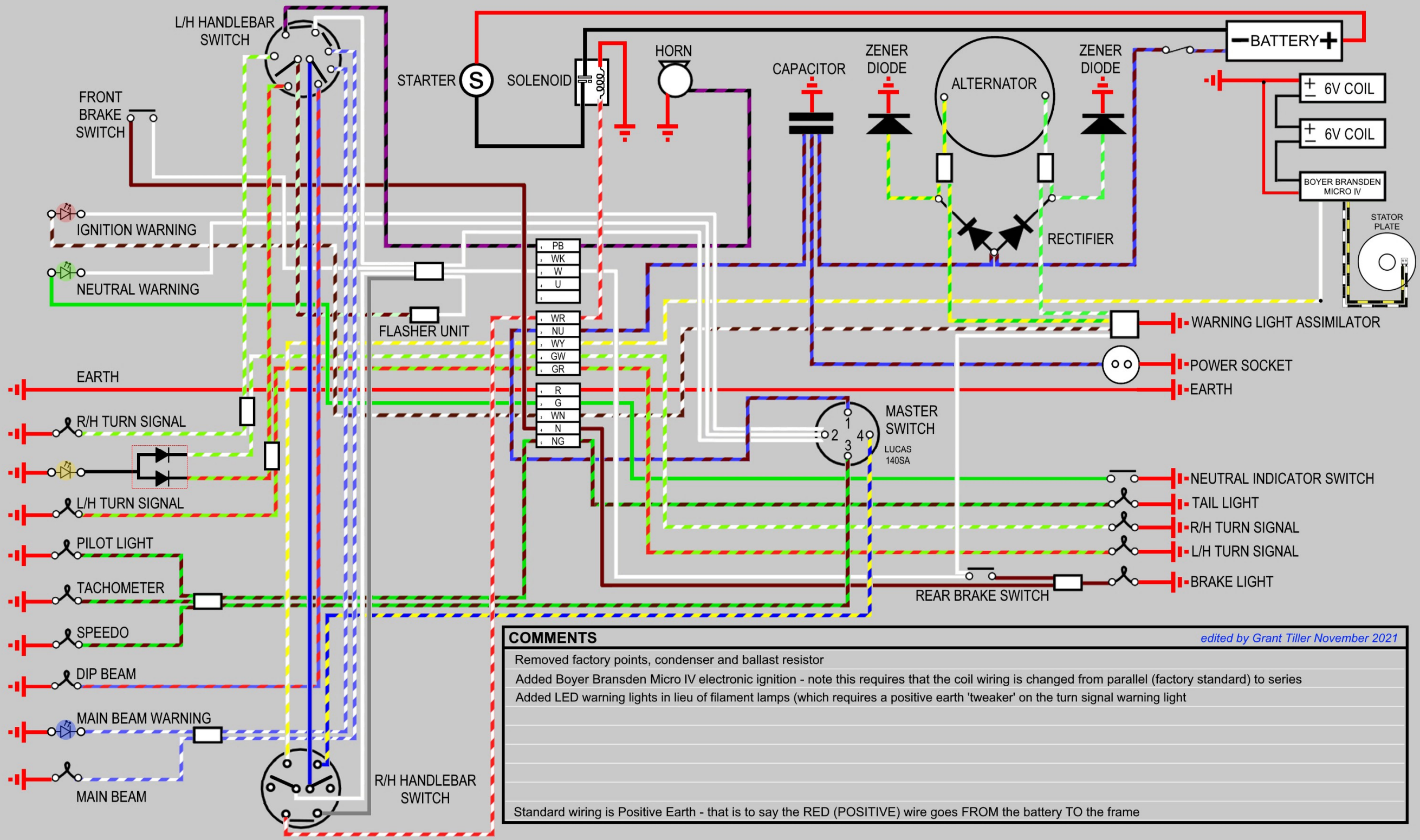


Custom Norton Commando Wiring Diagram - Phil Baker



COMMENTS *edited by Grant Tiller November 2021*

Removed factory points, condenser and ballast resistor

Added Boyer Bransden Micro IV electronic ignition - note this requires that the coil wiring is changed from parallel (factory standard) to series

Added LED warning lights in lieu of filament lamps (which requires a positive earth 'tweaker' on the turn signal warning light)

Standard wiring is Positive Earth - that is to say the RED (POSITIVE) wire goes FROM the battery TO the frame